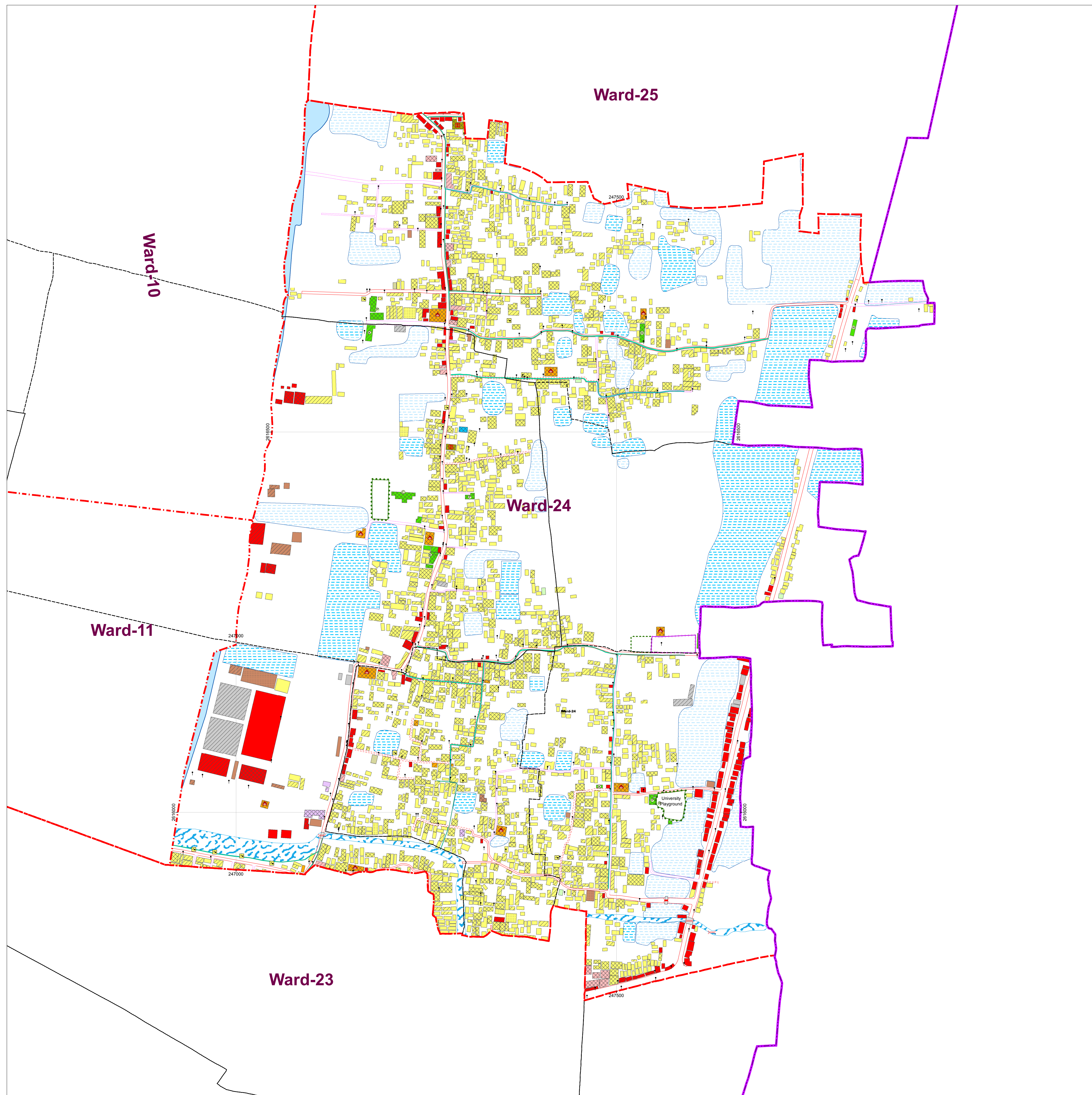


1:2050

# PHYSICAL FEATURE SURVEY MAP ( Ward Map )

## Ward-24

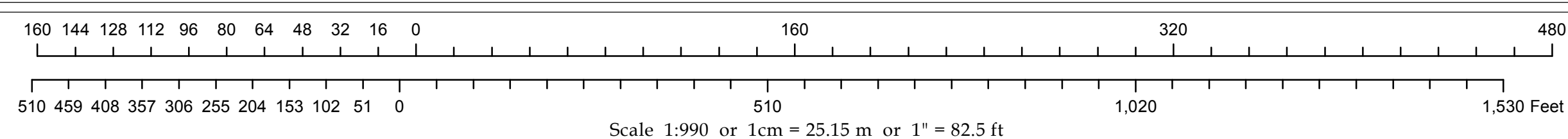


### CONSULTANT

**Development Design Consultants Ltd.**  
47 Mahabati C/A, Dhaka 1212, Bangladesh

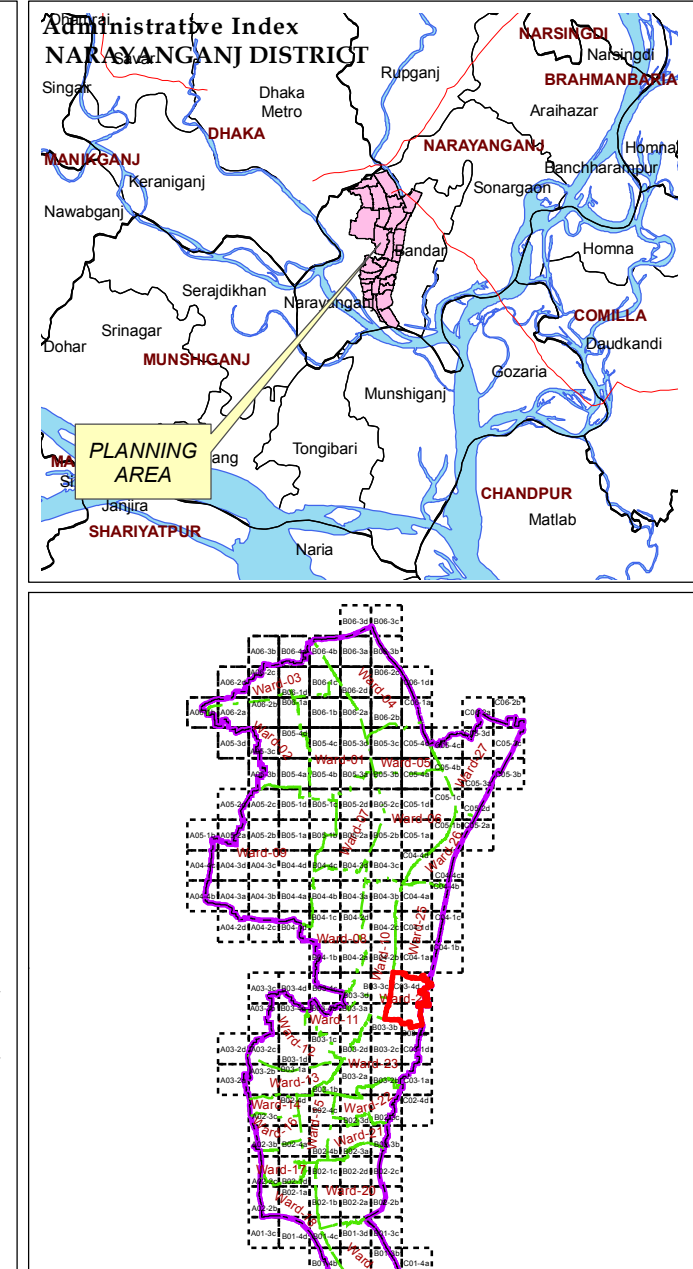
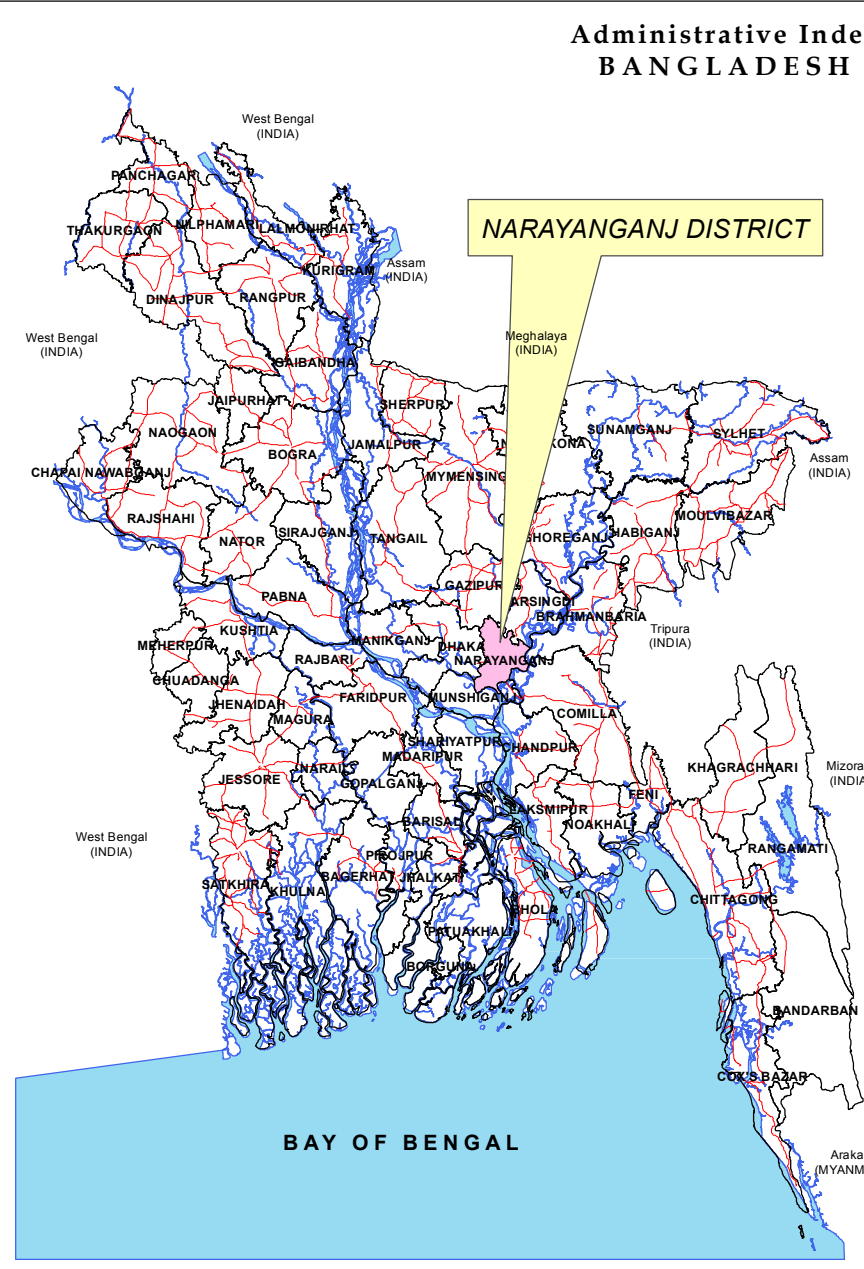


### PREPARATION OF ACTION AREA PLAN FOR NARAYANGANJ CITY CORPORATION



Government of the People's Republic of Bangladesh  
Ministry of Local Government, Rural Development and Cooperatives  
Local Government Division

Local Government Engineering Department (LGED)  
Preparation of Action Area Plan Narayanganj City Corporation (NCC)



LEGEND	
	City Corporation Boundary
	Ward Boundary
	Mauza Boundary
	Mauza Plot Boundary
	1990 Grid Boundary
	Divisional Headquarter
	Zila Parishad Office
	District Corporation Office
	District Headquarter (DC Office)
	Upazila Headquarter
	Union Parishad Office (Defunct)
	Road (Pucca)
	Road (Semi-pucca)
	Road (Katcha)
	Footpath
	Road Island
	Drain (Pucca)
	Drain (Katcha)
	Embankment
	Right of Way
	High Volt Electric Line
	Boundary Wall
	Water Supply Line
	Dustbin
	Electric Pole
	Electric Transformer
	Light Post
	Garbage Disposal Site
	Monument, Shahid Minar
	Bus Terminal
	Truck Terminal
	Railway Station
	High-Volt Electric Tower
	Mobile Tower
	TV/Radio Tower
	Telephone Tower
	Wireless Tower
	Traffic Signal Post
	Telephone Pole
	Telephone Box
	Water Reservoir
	Overhead Tank
	Deep Tube Well/Water Pump House
	Bridge
	Foot over Bridge
	Rail Gate
	Temple/Church/Pagoda
	Mazar/Dargah
	Hospital/Clinic
	Museum
	Historic Sites
	Auditorium, Cinema Hall, Theater Hall
	Brickfield
	Kindergarten/Nursery School
	Primary School
	High School
	High School & College
	Madrasa
	College
	NGO School/Other School
	University
	Refueling Station
	Fire Service
	Police Box
	Police Station
	Post Office/Post Box
	Power Plant/Electric Sub-Station
	Culvert
	Katcha/Tin Shed
	Semi-pucca
	Pucca
	Under Construction
	Agriculture
	Commercial Activities
	Education and Research
	Government Office
	Health Facilities
	Industrial Activities
	Miscellaneous Use
	Mixed Use
	Private Office
	Recreational Facilities
	Residential & Homestead
	Restricted Area
	Warehouse
	Transport and Communication
	Brickfield
	Bus/Truck Terminal
	Chatal
	Eidgah
	Electric Sub-Station/Power Station
	Forestland
	Gravayard/Cemetery/Crematorium
	Park/Playground/Stadium
	Restricted Area
	Railway Station
	Water Treatment Plant
	Waste Disposal Area
	Marshland/Beel
	Borrow Pits
	Lake
	Pond
	Ditch
	Canal/Irrigation Canal
	River
	Char

**Data Source**  
RS Mauza Maps, Directorate of Land Records and Survey (DLRS), GoB.

**Reference Bench Mark (RM)**  
Horizontal: EPSG-3246 for Latitude/Northing & Longitude/Easting.  
Vertical: GTS-5153, BM-7201, BM-6205, BM-701 and BM-702 for Reduce Level (RL) adjustment.

**Projection System: Universal Transverse Mercator coordinate system (UTM)**  
Spheroid : WGS84  
Datum : WGS84  
Units : Meters  
Parameters  
1st standard parallel : 23 09 00 (dd mm ss)  
2nd standard parallel : 28 48 00 (dd mm ss)  
Central Meridian : 90 00 00 (dd mm ss)  
Latitude of projection's origin : 00 00 00 (dd mm ss)  
False Easting : 500000 (m)  
False Northing : 0.0 (m)

**Survey Period** : September-December 2015  
**Date of Field Checking** : January 2016  
**Map Print** : January 2016

<b>Development Design Consultants Ltd.</b>	
(Md. Nasim Haider) City Specialist Preparation of Action Area Plan for Narayanganj City Corporation	(Dr. Md. Jahurul Hoque) Team Leader Preparation of Action Area Plan for Narayanganj City Corporation
<b>Local Government Engineering Department (LGED)</b>	
(Bivash Das) Urban Planner Preparation of Action Area Plan for Narayanganj and Gazipur City Corporation Project	(Md. Abdus Salam Mandal) Project Director of Long Bridge Construction Project on Upazila and Union Road, 1620 & Assigned Officer of Preparation of Action Area Plan for Narayanganj and Gazipur City Corporation Project
<b>Narayanganj City Corporation</b>	
(Planner Md. Moimul Islam) Urban Planner, Narayanganj City Corporation	(Md. Mostafa Kamal Mazumder) Chief Executive Officer, Narayanganj City Corporation

Note: Floor number of Single-storied structures is not labelled